

Early use of BIOBRANE[®] Temporary Biosynthetic Skin Dressing helps to reduce healing time of superficial and mid-dermal partial thickness burns

Use of BIOBRANE 12 hours after referral significantly reduced time to re-epithelialisation and number of outpatient visits compared with application of BIOBRANE after 48 hours



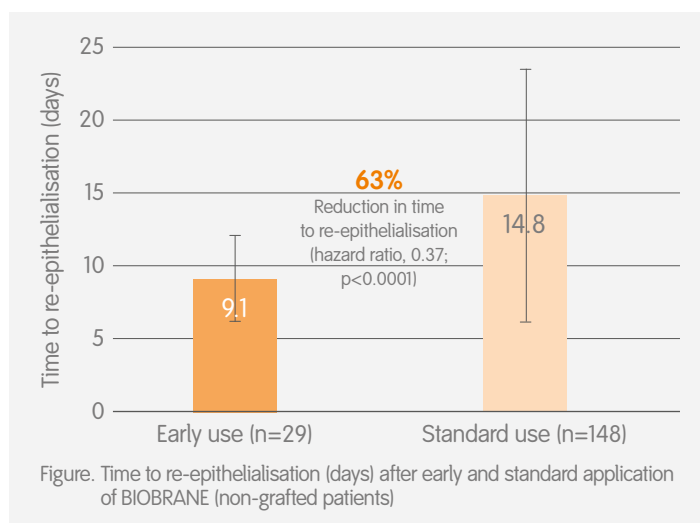
Study overview

- A pilot study to compare early and standard use of BIOBRANE (12 versus 48 hours after referral) conducted at the burns unit of the Concord Repatriation General Hospital, Sydney, Australia
- Patients with superficial and mid-dermal partial thickness burns received BIOBRANE prospectively within 12 hours of injury (n=29) and their clinical outcomes were compared to an historical cohort of patients who received BIOBRANE within 48 hours of injury (n=148)
- Mean age was similar in both groups (~38 years), there were more males (79.3 vs 53.4%) and mean total body surface area (TBSA) burned was greater (3.5 vs 2.6%) in the early versus standard treatment group



Key results

- Mean time to application of BIOBRANE was 7.1±2.7 hours with early treatment and 35.1±21.4 hours with standard treatment
- Mean time to re-epithelialisation was significantly shorter with early treatment than with standard treatment (p<0.0001; Figure)
- No patients in the early treatment group underwent split skin grafting compared with three patients in the standard treatment group (p=0.44)
- Early use of BIOBRANE resulted in fewer outpatient visits than standard use (3.2±2.2 vs 3.5±2.8 visits; p=0.02)



Conclusion

Early use of BIOBRANE significantly reduced time to re-epithelialisation and resulted in fewer outpatient visits compared with standard use in patients with superficial and mid-dermal thickness burns.



Study citation

*Harish V, Li Z, Maitz PKM. The optimal timing of outpatient Biobrane[®] application for superficial and mid dermal partial thickness burns: Evidence for the '12-hour rule'. *Burns*. 2018;S0305-4179(18):30583-7.

Available at: [Burns](#)

For detailed product information, including indications for use, contraindications, precautions and warnings, please consult the product's applicable Instructions for Use (IFU) prior to use.